



WHITE LION®

Dry Ice & Laser Cleaning Technology



THE WORLD OF DRY ICE

DRY ICE BLASTING SYSTEMS | PRODUCTION | TRANSPORT | SERVICE



The Dry Ice Innovations

CONTENT

Overview Dry Ice Blasting Systems	Page 4	Environmental compatibility	Page 24
WL Cube	Page 6	Producing dry ice	Page 26
WL 1000 MiniMax	Page 8	Manufacturing process dry ice	Page 28
WL 1500 Competition	Page 10	WL Antarctica S XL	Page 30
WL 3000 Profi	Page 12	Assecories: Main-Parts	Page 31
WL 3000 Profi Black Edition	Page 14	Assecories: WL Antarctica Pelletizer	Page 34
WL 3000 Iron	Page 16	Dry ice transport boxes	Page 35
WL 5000 AirMax 3/4"	Page18	Financing	Page 38
WL 5000 AirMax 1"	Page 20	Top Ten	Page 39
WL 5000 Robby	Page 22	Contact	Page 40

PROLOGUE

Dear readers,

Successful dry ice blasting starts with the right equipment. The White Lion portfolio has been designed with the demand to be able to offer an appropriate set of tools for any use case of the dry ice blasting process. On the following pages, we introduce this portfolio to you.

If you are interested in the stationary cleaning of industrial facilities like e.g. moulds, on page 8 you will find the model WL 1000 MiniMax, the compact and easy to handle solution of White Lion. Are you, however, looking for a mobile machine for various cleaning services, the models WL 1500 Competition and the WL 3000 Profi are tailored best for your needs. In case you want to integrate the dry ice blasting technique fully automated into your production process, on page 22 you will find the model WL 5000 Robby, the platform for your individual automation solution.

We deliver our manually operated blasting systems with a blasting gun, a round nozzle and the fitting hoses. You can get started immediately. Above that, our systems are optionally combinable with the accessories on the pages 32 to 33.

Call us on +49 6151 6066820 and turn to us for advice. Together we will find the best equipment for your challenge.

CONFIGURE INDIVIDUALLY

As with the purchase of a car, with White lion you can chose the individual equipment that suits your needs optimally.

Good to know ...
Custom-made products are a welcome challenge for us.

CHOOSING THE RIGHT DRY ICE BLASTING SYSTEM

1/2", 3/4" AND 1" INCH DRY ICE BLASTING DEVICES

The performance of a dry ice blasting machine is largely determined by two factors, on the one hand by its actual properties and quality, on the other hand by the compressed air supplied to the dry ice device.

The quality of the compressed air supply is defined by four criteria:

1. Air volume, volume flow
2. Air pressure in bar or psi
3. Humidity, preferably with low residual moisture
4. Oil-free

Air quantity and pressure should be as high as possible, in particular the air volume in combination with the air pressure is crucial for the performance of the dry ice blasting process. Make sure that your dry ice blasting device is designed to match the amount of air you can provide so that you do not lose performance due to over-dimensioning. For this reason, the professional distinguishes the following device categories:

1/2", 3/4" and 1" inch dry ice blasting devices
We know and understand this problem and therefore offer you a wide selection of dry ice blasting systems with the following sensible configuration so that the best possible performance can be achieved from existing air performance.

- 1 1/2"

Dry ice blasting devices
WL CUBE
WL 1000 Minimax
- 3/4"

Dry ice blasting devices
WL 1500 Competition
WL 3000 Profi
WL 3000 IRON
WL 5000 AirMax
- 1"

Dry ice blasting devices
WL 3000 Profi
Special construction possible
WL 3000 IRON
Special consttruction possible
WL 5000 AirMax



ALL DRY ICE BLASTING SYSTEMS AT A GLANCE



The „Cube“

The compact, intelligent multi-talent from White Lion. A special combination of grinder for so-called microparticles and dosing unit achieves impressive results. Due to its minimal compressed air consumption, the Cube also has a significantly lower noise emission depending on the application.



The MiniMax

Designed for stationary use, where contaminants are continuously deposited, such as in the molding plastics industry. A simply dry ice blasting device with constant performance parameters.



Our Competition

The White-Lion start-up package for your professional beginning, flexible, mobile and with respectable blasting power. A dry ice blasting system ideal for beginners with a flexible performance range.



The Allrounder

The WL 3000 Basic Profi, simply impressive and powerful it is ready for use in all areas of application. The preferred dry ice blasting machine in the service industry. The 3000 series also consist of the IRON and our Black Edition. All devices in this series have the same performance parameters, only design, form and material are different.



Black is beautiful

Our WL 3000 Black Edition has a special modern outfit. It also has a practical transport bracket and wide tires. The performance parameters are the same as the WL 3000 Basic Profi.



The Iron

The WL 3000 Iron is built to last eternal! The frame construction is made of high-quality stainless steel and is fully welded, the surface is electropolished - the result is maximum functionality, stability and puristic design.



Powerful and outstanding!

The WL 5000 AirMax in 3/4 or 1 inch variant with an enormous filling container, is the White Lion answer for permanent and powerful use. The steam hammer among the blasting systems is the WL 5000 AirMax 1". With a flow rate up to 280 kg dry ice in combination with a high volume of compressed air, this is the dry ice blasting system for the toughest industrial challenge.



For the automated process in surface technology

Blasting and cleaning as if by itself, our WL 5000 Robby. This blasting machine is equipped with a robot interface and sensors. Our solution for 24-hour use on 365 days. Also a direct filling through an integrated Pelletizer solution is possible.

WL Mini Cube

MADE
IN
GERMANY

DER WHITE LION CUBE A VERITABLE COOL MULTI-TALENT

1/2 ZOLL

The White Lion Cube is literally a cube. Its dimensions 48×48×48 cm with a weight of approx. 45kg are a credit to its name.

A completely new development is the integrated dry ice grinder, a type of mill that continuously grinds the required 3mm blasting granules of dry ice pellets to the desired size. This is where the so-called dry ice micro particles are produced. These fine CO₂ ice particles enable particularly gentle and at the same time effective cleaning of moulded parts or tools.

These microparticles provide special access to surfaces and materials that cannot be achieved with traditional dry ice blasting.

The White Lion Cube can be used for plastic injection moulding, laboratories, technology developments, but also for upholstery (train bus vehicle) or cockpit cleaning.

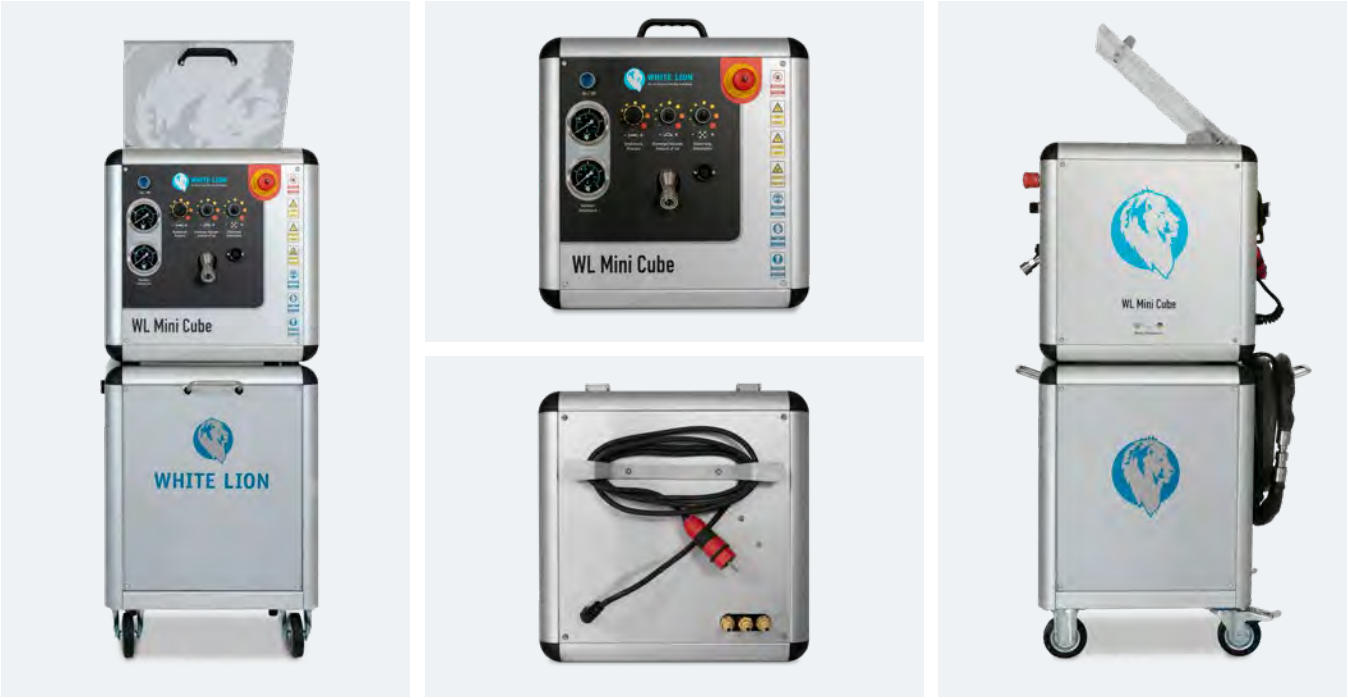
The Cube can produce amazing cleaning results from an air volume of 0.5m³ per min. air flow and an air pressure of 0.5 bar.

The highlight are its three 4 mm compressed air connections. With sufficient volume flow (from the customer), these ensure even faster tool machining. This makes its performance almost comparable to that of a 3/4 inch dry ice blasting system, such as our WL 1500 Competition.

The proven practical glass lid, which is used in all White Lion dry ice blasting machines, is also found in the White Lion Cube. So you can easily recognize the filling quantity of dry ice. The filling container is made of stainless steel and has high-quality insulation.

Be mobile and comfortable in your production. As accessories, there are two different sized Cube trolleys with space for a 36l or 12,5l dry ice box as well as industry-specific tools. Further accessories can be found in the menu item Accessories.

If we could arouse your interest for our cool power cube, we are pleased to advise you personally. Call us or send us an inquiry, we look forward to hearing from you.



TECHNICAL DETAILS

GENERAL DATA

- Designation: White Lion Cube dry ice blasting unit
- Blasting system: Single hose system
- Blasting material: dry ice pellets up to 3 mm diameter
- Dry ice consumption: 0- 60 kg/h (infinitely variable)
- Dry ice capacity in filling container: approx. 10 kg (insulated with electric vibrator)
- Blast hose 1/2" available in different lengths: 1,5 m, 2,5 m, 5m
- Compressed air supply line 1× 2.5m quick coupling 4mm, connection possibility for 3X quick coupling
- Dimensions (L x W x H): 480 mm x 480 mm x 480 mm
- Weight: 45 kg
- Manufacture: Germany

COMPRESSED AIR DATA

- Air consumption: 0.2 – 3.3 m³/min (depending on nozzle)
- Application pressure: 0.5 – 10 bar
- Perm. operating pressure: up to 10 bar
- Optimum air quality in accordance with ISO standard 8573-1: Class 3: Oil and largely free of water

ELECTRICAL DATA

- Power supply: 240 V / 50 – 60 Hz (other voltage on request)
- Electrical power: 500 W

+ HIGHLIGHTS

- + Comfortable nozzle change without tools
- + Internal compressed air regulation from 0.5 – 10 bar
- + Infinitely variable dry ice pellet delivery volume adjustment from 0 – 60 kg/h
- + Infinitely adjustable grain size, smaller than 3mm dry ice pellets
- + Electronic ice mill control
- + Compressed air and blasting pressure manometer
- + Filling container with glass lid
- + Compact cubic design
- + Blast gun with integrated LED illumination
- + Filling container with glass lid

Included in delivery

- + Blasting pistol with integrated LED illumination with 5mm round nozzle
- + Hose package heat resistant up to 700 degrees 5 m
- + compressed air hose 5m, quick coupling 4mm
- + 5 m main cable with Schuko plug

WL 1000 MiniMax

MADE
IN
GERMANY

THE MINIMAX-EFFEKT

1/2 INCH

Our dry ice blasting machine WL 1000 Minimax is a simple solution, especially for the robust continuous use in industry. The Minimax is mainly used for cleaning metal moulds.

The ideal conditions for using the WL 1000 Minimax dry ice blasting unit are met wherever there are constant compressed air conditions (usually a factory compressed air supply of 6 bar with 6 standard cubic per min.).

For use in foundries, a refractory, heat-resistant dry ice blasting hose can be supplied as an option. For stationary use, the systems can be ordered on feet, and unnecessary operating elements can also be dispensed with.

A factory-set presetting ensures a constant line on the mould surface.

If we have aroused your interest with this dry ice blasting unit, we would be pleased to advise you personally. Please just send us an inquiry or call us, we look forward to hearing from you.



Standard version
without chassis



TECHNICAL DETAILS

GENERAL DATA

- Designation: WL 1000 MiniMax
- Blasting system: Single hose system
- Blasting material: dry ice pellets – 3 mm diameter
- Dry ice consumption: 5 – 55 kg/h (infinitely variable)
- Dry ice capacity in filling container: approx. 10 kg (insulated and electrovibrating)
- Blast hose 1/2" available in lengths of 2.5 m and 5 m
- Compressed air hose 1" available in length 10 m
- Dimensions (L x W x H): 530 mm x 550 mm x 650 mm
- Weight: 70 kg
- Manufacture: Germany

COMPRESSED AIR DATA

- Air consumption: 1 – 6 m³/min / (depending on application)
- Application pressure: 1 – 10 bar
- Perm. operating pressure: up to 10 bar
- Optimum air quality according to ISO standard 8573-1:
Class 3: Oil- and dust- free

ELECTRICAL DATA

- Power supply: 230 V / 50 – 60 Hz (other voltage on request)
- Electrical power: 750 W

+ HIGHLIGHTS

- + Comfortable nozzle change without tools
- + Internal compressed air regulation 1-10
- + Infinitely variable dry ice pellet delivery volume adjustment from 5 – 55 kg/h.
- + Emergency stop function with red LED signal lamp
- + Compactest and smallest dry ice blasting machine from White Lion
- + Acid-resistant wheels with roller bearings
- + Conductive wheels against static charge
- + Filling container with glass lid

Included in delivery

- + pistol with universal power nozzle
- + hose package 5 m
- + Compressed air hose with MODY claw couplings
- + 10 m main cable with Schuko plug – CEE 7/4

WL 1500 Competition

MADE
IN
GERMANY

THE COMPACT
SOLUTION FOR DRY ICE
CLEANING
WL 1500 COMPETITION
¾ INCH

The made-to-order solution for innovative dry ice cleaning. The dry ice blasting system WL 1500 Competition is a very compact and light solution for cleaning surfaces of all kinds.

Remove impurities from plants and machines and molds using the dry ice blasting method. This small and impressively powerful machine is characterized by professional features with outstanding cleaning performance.

The process is economically quick and helps companies to reduce maintenance costs.

The technical features include a pressure reducer and continuously variable digital pellet settings from 20 to 80 kg/h.

It is possible to work very smooth and economically, as well as to remove rough soiling with these features. These features make the WL 1500 Competition very flexible in terms of its possible applications.

The filling container is made of stainless steel and has high-quality insulation. All White Lion dry ice blasting systems are equipped with a glass lid for easy checking of the filling container.

Like all White Lion products, our WL 1500 Competition dry ice blasting unit was developed for robust continuous use. Made in Germany!

Have we aroused your interest?

We look forward to advising you comprehensively. We would be pleased to present our dry ice blasting systems to your company.



TECHNICAL DATA

GENERAL DATA

- Designation: White Lion WL 1500 Competition
- Blasting system: single-hose-system
- Blasting medium: dry ice pellets – 3 mm diameter
- Dry ice consumption: 20 – 80 kg/h (continuously variable)
- Dry ice hopper capacity: 15 kg (isolated and electrovibrated)
- Blasting hose ¾" available in different length: 1,5 m, 7,5 m, 10 m
- Compressed air hose 1" available in length 10 m
- Dimensions (LxWxH): 530 mm x 550 mm x 700 mm
- Weight: 75 kg
- Manufacture: Germany

COMPRESSED AIR DATA

- Air consumption: 1 – 10 m³/min (depending on application)
- Application pressure: 1 – 10 bar
- Permissible operating pressure: up to 10 bar
- Optimum air quality in accordance with ISO standard 8573-1: Class 3: Oil- and dust-free

ELECTRICAL DATA

- Power supply: 230 V / 50 – 60 Hz (other voltages available on request)
- Electrical power: 700 Watt

+ HIGHLIGHTS

- + Internal compressed air pressure adjustment from 1 – 10 bar
- + Dry ice pellet delivery volume continuously variable from 20 – 80 kg/h
- + Digital display showing the dry ice pellet transport volume
- + Emergency stop function with red LED signal lamp
- + Acid resistant wheels with roller bearing
- + Conductive wheels against static charge
- + Filling container with glass lid

Included in delivery

- Ice gun with universal power nozzle
- Blasting hose 7,5 m
- Compressed air hose 10 m with MODY-claw couplings
- 10 m power cable with Shuko plug – CEE 7/4

WL 3000 Profi

**MADE
IN
GERMANY**

THE MULTI-PURPOSE AND LIGHTWEIGHT ALL- ROUNDER AMONG THE DRY ICE BLASTING MACHINE

3/4 INCH

It should be compact and functional, that is and was our requirements in the development of this dry ice blasting system.

The White Lion 3000 Profi is equipped with a filling container with glass lid, a conductive chassis and a light and at the same time robust aluminum casing. This makes this dry ice blasting system so unique, economical and powerful as well.

The dry ice blasting system WL 3000 Profi is a universally applicable mobile dry ice blasting machine for the technical cleaning of surfaces with different impurities and convinces with versatility and comfort. Our successful WL 3000 series consists of three different variants,

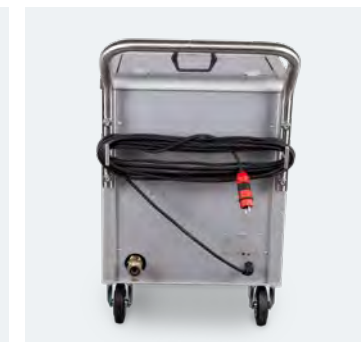
the WL 3000 Profi, the stainless steel version WL 3000 IRON and the WL 3000 Black Edition.

The very high volume of dry ice pellets from 20kg / h up to 120 kg / h enables a fast processing speed even with intensive contamination with highest economic efficiency. The removal rate of the impurity is high, which is appreciated especially by our customers in the service industry.

Find out more about the countless applications in our menu item applications on our page www.white-lion.eu.

This dry ice blaster, like all White Lion machine types, is available in a variety of configurations and can be equipped with a wide range of accessories.

Give us a call and let us advise you competently, so we can create your personal offer customised to your requirements.



TECHNICAL DATA

GENERAL DATA

- Designation: White Lion WL 3000 Profi
- Blasting system: single-hose system
- Blasting medium: dry ice pellets - 3 mm diameter
- Dry ice consumption: 20 – 120 kg/h (continuously variable)
- Dry ice hopper capacity: 30 kg (isolated and electrovibrating)
- Blasting hose 3/4" available in different lengths: 1,5 m, 7,5 m, 10 m
- Compressed air hose 1" available in length 10 m
- Dimensions: (L x W x H): 675 mm x 580 mm x 900 mm
- Weight: 80 kg
- Manufacture: Germany

COMPRESSED AIR DATA

- Air consumption: 1 – 16 m³/min (depending on application)
- Application pressure: 1 – 16 bar
- Permissible operating pressure: up to 16 bar
- Optimum air quality in accordance with ISO standard 8573-1: Class 3: Oil and dust-free

ELECTRICAL DATA

- Power supply: 230 V / 50 – 60 Hz (other voltages on request)
- Electrical power: 750 W

In special construction as 1" possible.

+ HIGHLIGHTS

- + Quick nozzle replacement without tools
- + Internal compressed air pressure adjustment from 1 – 16 bar
- + Dry ice pellet delivery volume continuously variable from 20 – 120 kg/h
- + Digital display showing the dry ice pellet transport volume
- + Emergency stop function with red LED signal lamp
- + Acid-proof wheels with antifriction bearing
- + Conductive wheels against static charge
- + Compressed air and blasting pressure gauges
- + Filling container with glass lid
- + This dry ice blasting system is also optionally available as a complete 1-inch version (compressed air hose, blasting hose and gun)

Included in the delivery

- Ice gun with universal power nozzle
- Blasting hose 10 m
- Compressed air hose 10 m with MODY-claw couplings
- 10 m power cable with Schuko-plug – CEE 7/4

WL 3000 Black Edition

MADE
IN
GERMANY

THE MULTIPURPOSE AND LIGHTWEIGHT ALL ROUNDER AMONG THE DRY ICE BLASTING MACHINE

3/4-INCH

It should be compact and functional, that is and was our requirements in the development of this dry ice blasting system.

The White Lion 3000 Black Edition is equipped with a filling container with glass lid, a conductive chassis and a light and at the same time robust aluminum casing. This makes this dry ice blasting system so unique, economical and powerful as well.

The dry ice blasting system WL 3000 Black Edition is a universally applicable mobile dry ice blasting machine for the technical cleaning of surfaces with different impurities and convinces with versatility and comfort. Our successful WL 3000 series consists of three different variants,

the WL 3000 Profi, the stainless steel version WL 3000 IRON and the WL 3000 Black Edition.

The very high volume of dry ice pellets from 20kg / h up to 120 kg / h enables a fast processing speed even with intensive contamination with highest economic efficiency. The removal rate of the impurity is high, which is appreciated especially by our customers in the service industry.

Find out more about the countless applications in our menu item applications on our page www.white-lion.eu.

This dry ice blaster, like all White Lion machine types, is available in a variety of configurations and can be equipped with a wide range of accessories.

Give us a call and let us advise you competently, so we can create your personal offer customised to your requirements.



TECHNICAL DATA

GENERAL DATA

- Designation: White Lion WL 3000 Profi Black Edition
- Blasting system: single-hose system
- Blasting medium: dry ice pellets - 3mm diameter
- Dry ice consumption: 20 – 120 kg/h (continuously variable)
- Dry ice hopper capacity: 30 kg (isolated and electrovibrating)
- Blasting hose 3/4" variable in different length: 1,5 m, 7,5 m, 10 m
- Compressed air hose 1" available in length 10 m
- Dimensions (L x W x H): 675 mm x 580 mm x 900 mm
- Weight: 80 kg
- Manufacture: Germany

COMPRESSED AIR DATA

- Air consumption: 1 – 16 m³/min (depending on application)
- Application pressure: 1 – 16 bar
- Permissible operating pressure: bis 16 bar
- Optimum air quality in accordance with ISO standard 8573-1: Class 3: Oil and dust-free

ELECTRICAL DATA

- Power supply: 230 V / 50 – 60 Hz (andere Spannung auf Anfrage)
- Electrical supply: 750 W

In special construction in 1" possible.

+ HIGHLIGHTS

- + Quick nozzle replacement without tools
- + Internal compressed air pressure adjustment from 1 – 16 bar
- + Dry ice pellet delivery volume continuously variable from 20 – 120 kg/h
- + Digital display showing the dry ice pellet transport volume
- + Emergency stop function with red LED signal lamp
- + Acid-proof wheels with antifriction bearing
- + Conductive wheels against static charge
- + Compressed air and blasting pressure gauges
- + Filling container with glass lid
- + This dry ice blasting system is also optionally available as a complete 1-inch version (compressed air hose, blasting hose and gun)

Included in the delivery

- Ice gun with universal power nozzle
- Blasting hose 10 m
- Compressed air hose 10 m with MODY-claw couplings
- 10 m power cable with Schuko-plug – CEE 7/4

WL 3000 Iron

OF ROBUST
CONSTRUCTION AND
INDESTRUCTIBLE IS THIS
MULTI-PURPOSE DRY ICE
BLASTING MACHINE WITH
A LARGE APPLICATION
PORTFOLIO DESIGNED FOR
ETERNITY

3/4-INCH

The very high volume of dry ice pellets from 20 kg/h up to 140 kg/h enables a fast processing speed even with intensive contamination with highest economic efficiency. The removal rate of the impurity is high, which is appreciated especially by our customers in the service industry.

Find out more about the countless applications in our menu item applications.

This dry ice blaster, like all White Lion machine types, is available in a variety of configurations and can be equipped with a wide range of accessories.

Give us a call and let us advise you competently, so we can create your personal offer customised to your requirements.



Compact, functional and very robust – that is and was our requirements for the development of this special dry ice blasting system.

The White Lion 3000 IRON is equipped with a filling container with glass lid, large tires and a robust stainless steel casing with electropolished surface, the side walls are also made of stainless steel. These highlights make this dry ice blasting system unique, economical and powerful at the same time.

The dry ice blasting system WL 3000 IRON is a universally applicable mobile dry ice blasting machine for the technical cleaning of surfaces with a wide variety of impurities. Our successful WL 3000 series consists of three different variants, the WL 3000 Profi, WL 3000 Black Edition and the stainless steel version WL 3000 IRON. All plant types meet special requirements.

MADE
IN
GERMANY



TECHNICAL DETAILS

GENERAL DATA

- Designation: White Lion WL 3000 Iron
- Blasting system: single-hose system
- Blasting medium: dry ice pellets - 3 mm diameter
- Dry ice consumption: 20 – 140 kg/h (continuously variabel)
- Dry ice hopper capacity: 30 kg (isolated and electrovibrating)
- Blasting hose 3/4" available in different lengths: 1,5 m, 5 m, 7,5 m, 10 m
- Compressed air hose 1" available in length 10 m
- Dimensions (L x W x H): 675 mm x 580 mm x 900 mm
- Weight: 110 kg
- Manufacture: Germany

COMPRESSED AIR DATA

- Air consumption: 1 – 16 m³/min (depending on application)
- Application pressure: 1 – 16 bar
- Permissible operating pressure: up tp 16 bar
- Optimumg air quality in accordance with ISO standard 8573-1: Klasse 3: Oil and dust-free

ELECTRICAL DATA

- Power supply: 230 V / 50 – 60 Hz (other voltages on request)
- Electrical Power: 750 W

In special construction in 1" possible.

+ HIGHLIGHTS

- + Qick nozzle replacement without tools
- + Internal compressed air pressure adjustment from 1 – 16 bar
- + Dry ice pellet delivery volume continuously variable from 20 – 140 kg/h
- + Digital display showing the dry ice pellet transport volume
- + Emergency stop function with red LED signal lamp
- + Acid-proof wheels with antifriction bearing
- + Conductive wheels against static charge
- + Compressed air and blasting pressure gauges
- + Filling container with glass lid
- + This dry ice blasting system is also optionally available as a complete 1-inch version (compressed air hose, blasting hose and gun)

Included in the delivery

- Ice gun made of impact proof plastic (with ingetrated protection arc and locking device, combinable with every nozzle of White Lion)
- Universal power round nozzle
- Blasting hose 10 m (with quick coupling system, anti-twisting-protection and resistant, replaceable PU hose film
- Compressed air hose 10 m with MODY-claw couplings
- 10 m power cable Schuko-plug – CEE 7/4

WL 5000 AirMax ¾-Inch

MADE
IN
GERMANY

THE SPECIAL CHOICE FOR DEMANDING DRY ICE CLEANING

¾-INCH

Small or big wishes – the best ones are those fulfilled. Our dry ice blasting machine WL 5000 AirMax ¾ inch is a versatile, variable dry ice blasting machine for cleaning surfaces of the most diverse impurities.

This dry ice blasting unit has been developed for robust and demanding continuous operation.

The high filling volume of 50kg dry ice pellets makes the operation of this system comfortable, the filling interval is therefore significantly longer with this dry ice blasting unit.

The dry ice container is made of stainless steel and, like all White Lion dry ice blasting rods, has a glass lid for easy level control.

The conveying volume of 140kg/h dry ice makes these systems a sovereign partner of the industry.

If this range of lines is not sufficient for you, we offer you this system alternatively also in the 1 inch variant, with even more power for powerful moments in life.

The frame of the dry ice blasting unit is made of aluminium so that transport is as easy as possible. All other relevant components are made of stainless steel to ensure a long service life.



TECHNICAL DATA

GENERAL DATA

- Designation: White Lion WL 5000 AirMax
- Blasting system: single-hose
- Blasting medium: dry ice pellets - 3 mm diameter
- Dry ice consumption: 20 – 140 kg/h (continuously variable)
- Dry ice hopper capacity: 50 kg (isolated and electrovibrating)
- Blasting hose ¾" available in different lengths: 7,5 m oder 10 m
- Compressed air hose 1" available in length 10 m
- Dimensions (L x W x H): 675 mm x 580 mm x 1100 mm
- Weight: 110 kg
- Manufacture: Germany

COMPRESSED AIR DATA

- Air consumption: 1 – 16 m³/min (depending on application)
- Application pressure: 1 – 16 bar
- Permissible operating pressure: up to 16 bar
- Optimum air quality in accordance with ISO Standard 8573-1: Class 3: Oil and dust-free

ELECTRICAL DATA

- Power supply: 230 V / 50 – 60 Hz (other voltages available on request)
- Electrical supply: 750 W

+ HIGHLIGHTS

- + Quick nozzle replacement without tools
- + Internal compressed air pressure from 1 – 16 bar
- + Dry ice pellet delivery volume continuously variable from 20 – 140 kg/h
- + Digital display showing the dry ice pellet transport volume
- + Emergency stop function with red LED signal lamp
- + Acid-proof wheels with antifriction bearing
- + Conductive wheels against static charge
- + Druckluft- und Strahldruck-Manometer
- + Filling container with glass lid
- + This dry ice blasting system is also optionally available as a complete 1-inch version (compressed air hose, blasting hose and gun)

Included in delivery

- Gun with universal power nozzle
- Blasting hose 10 m
- Compressed air hose 10 m with MODY-claw coupling
- 10 m power cable with Schuko-plug – CEE 7/4

WL 5000 AirMax 1-Zoll

MADE
IN
GERMANY

THE POWERFUL WAY TO BLAST DRY ICE

1-INCH

The White Lion dry ice blast machine WL 5000 AirMax 1-inch is a true steam hammer, designed and engineered for the world's toughest industrial jobs.

Our dry ice blasting unit is consistently manufactured in 1 inch cross-section, allowing for high volume flows of compressed air. The recoil during blasting is directly noticeable, the operator of the plant notices this immediately. In combination with a delivery rate of up to 250kg/h dry ice pellets (the delivery rate can be increased in special constructions), this dry ice blasting machine unfolds its convincing power on the surface to be cleaned.

The typical tasks of this system are, for example, applications in the shear oil industry as well as in refineries, such as paint stripping from a tank farm. But also in shipbuilding there are innumerable application possibilities.

The WL 5000 AirMax 1-inch dry ice blasting machine has been specially developed for powerful, robust and demanding continuous operation.

The stainless steel dry ice filling container has a capacity of 50 kg dry ice pellets two vibrators provide a reliable pellet supply.

Like all White Lion dry ice blasting systems, the WL 5000 AirMax 1-inch has a glass lid and conductive wheels.

Contact us for advice on this special dry ice blasting system and we look forward to hearing from you.



TECHNICAL DETAILS

GENERAL DATA

- Designation: White Lion WL 5000 AirMax
- Blasting system: Single hose system
- Blasting material: dry ice pellets
- Dry ice consumption: 20 – 250 kg/h, steplessly adjustable (the flow rate can be increased in special constructions)
- Dry ice capacity in filling container: 50 kg (isolated and electrovibrating)
- Blasting hose 1" available in different lengths: 7,5 m or 10 m
- Compressed air hose 1,5" available in length 10 m
- Dimensions (L x B x H): 675 mm x 580 mm x 1100 mm
- Weight: 110 kg
- Manufacture: Germany

COMPRESSED AIR DATA

- Air consumption: 1 – 16 m³/min (depending on application)
- Application pressure: 1 – 16 bar
- Perm. operating pressure: up to 16 bar
- Optimum air quality according to ISO standard 8573-1: Class 3: Öl- und staubfrei

ELECTRICAL DATA

- Power supply: 230 V / 50 – 60 Hz (other voltage on request)
- Electrical power: 750 W

+ HIGHLIGHTS

- + Comfortable nozzle change without tools
- + Internal compressed air regulation from 1 – 16 bar
- + Infinitely variable dry ice pellet delivery volume adjustment from 20 – 250 kg/h
- + Digital display for the pellet delivery volume
- + Emergency stop function with red LED signal lamp
- + Acid-resistant wheels with roller bearings
- + Conductive wheels against static charge
- + Compressed air and blasting pressure manometer
- + Filling container with glass lid

Included in delivery

- Ice gun with universal power nozzle
- Hose package 10 m
- Compressed air hose 10 m with MODY claw couplings
- 10 m power cable with Schuko plug – CEE 7/4

WL 5000 Robby

**MADE
IN
GERMANY**

AUTOMATED PROCESS IN INDUSTRY, EVERYTHING IS POSSIBLE



Dry ice blasting does not have to be a manual trade, but can also be conveniently integrated into automated production processes.

This not only reduces production time and costs, but is also accompanied by an increased quality of surface cleaning with precise adjustment.

The number of industries that can benefit from automated dry ice blasting is large and diverse. On the one hand, there is the plastics industry, which can deburr or clean workpieces with complex geometries more effectively. The necessary movements of the robot are clocked once and can then be called up as often as required for the same workpieces – with constant precision.

In modern surface technology, the dry ice blasting process offers a number of advantages. Many automobile manufacturers now take dry ice pre-treatment or cleaning for granted so that the composite or material mix in a vehicle always gains in functionality and quality.

Foundries, for example, can also make their production more effective with an automated cleaning solution, especially when cleaning casting moulds.

In order to get the most out of an automated dry ice blasting machine, you need a lot of expertise, experience and good advice.

Is automation profitable? What are the circumstances associated with the upgrade? How do I calibrate the blasting process? Does my production environment provide the necessary infrastructure? Interested production managers can contact White Lion with such questions. White Lion not only offers one of the best automated dry ice blasting solutions with the WL 5000 Robby, but integrates it with a service and consultancy based on decades of dry ice blasting experience.

The WL 5000 Robby model can be automated in all degrees of freedom. Parameters such as blasting pressure and dry ice throughput can be controlled in all common robot languages.

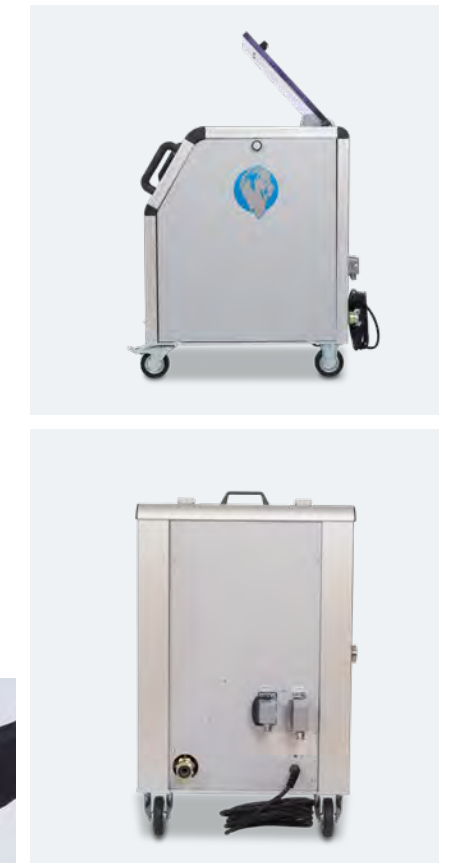


As a unique feature, the WL 5000 Robby offers ice flow control: sensors can notify the robot system when no more ice leaves the nozzle, so that the responsible personnel can be notified immediately of the malfunction. Like all systems, our dry ice blasting system “Robby” has a glass lid for convenient level control and a 50 kg stainless steel filling container with a special non-stick coating including high-quality insulation. The wheels are conductive against static charges. Alternatively, the dry ice blasting machine can also be manufactured with feet, depending on customer requirements. We are happy to manufacture and develop your customized automated solution.

If the system is to work even more autonomously, White Lion offers the model WL 5000 Robby Plus, a dry ice blasting machine with integrated pelletizer. Dry ice production takes place directly in the machine. Manual refilling of dry ice pellets is no longer necessary.

The degree of autonomy is in the hands of the customer. For the most profitable balance, White Lion is always at your side with its experience.

Give us a call, we will be pleased to advise you and support you with our expertise.



TECHNICAL DETAILS

GENERAL DATA

- Designation: White Lion Type WL 5000 Robby
- Blasting system: Single hose system
- Blasting material: dry ice pellets - 3 mm diameter
- Dry ice consumption: depending on dosing disc 5 – 120 kg/h
- Dry ice capacity in filling container: 50 kg (insulated and electrovibrating)
- Blast hose ¾" available in different length: 2,5 m, 5 m, 7,5 m, 10 m
- Compressed air hose 1" available in length 10 m
- Dimensions (L x B x H): 675 mm x 580 mm x 1100 mm
- Weight: 92 kg
- Manufacture: Germany

COMPRESSED AIR DATA

- Air consumption: 1 – 16 m³/min (depending on application)
- Application pressure: 1 – 16 bar
- Permissible operating pressure: up to 16 bar
- Optimum air quality according to ISO standard 8573-1: Class 3: Oil- and dust-free

ELECTRICAL DATA

- Power supply: 230 V / 50 – 60 Hz (andere Spannung auf Anfrage)
- Electrical Power: 750 W

+ HIGHLIGHTS

- + Comfortable nozzle change without tools
- + Internal compressed air regulation from 1 – 16 bar
- + Infinitely variable dry ice pellet delivery volume adjustment depending on dosing disc from 5 – 120 kg/h
- + Emergency stop function with red LED signal lamp
- + Can be controlled via the PLC control of any computer systems
- + Acid-resistance wheels with roller bearings
- + Conductive wheels against static charge
- + Compressed air and blasting pressure manometer
- + Filling container with glass lid

Delivery inclusions

In cooperation with you we compile a set of accessories that fits your needs.

Industrial cleaning does not necessarily have the reputation of being environment friendly. Not without reason because the wastage of drinking water in traditional high pressure water blasting is enormous. Contaminated by chemicals and cleaners the sewage quite often must be thoroughly and carefully treated. In chemical cleaning processes, there additionally is the inconvenience of harmful fumes of solvents or the products of reactions.

For the application of dry ice blasting however neither chemicals nor solvents are needed. Unnecessary environmental pollution is avoided and the personnel is furthermore not exposed to toxic fumes or liquids. As a blasting agent, only dry ice - frozen CO₂ - is needed. Yet the procedure is CO₂ neutral, because for the dry ice production only CO₂ from natural sources is used. No consumption of non-renewable resources, no green-house-effect, no contaminated blasting agent residues.

ENVIRONMENTAL COMPATIBILITY

White Lion is that green



Cold, colder, White Lion Antarctica

**MADE
IN
GERMANY**

ALMOST A COLD RECORD

Dry Ice is a multi-faceted, first-rate cooling agent with fascinating physical properties. Dry ice does not melt into water but sublimates into its gaseous state. Its coldness of -78,48 degrees Celsius is nearing the antarctic ground zero records. The temperatures in the Antarctic often fall far below -60 celsius with the lowest ever measured cold record being -93.2 degrees Celsius. This figure was determined via satellite on a high plateau in the eastern Antarctic.

Such properties as the ones mentioned contribute to dry ice being, amongst other things, an ideal cooling and blasting agent.

Without secondary waste material this procedure generates the maximum purity.

These properties are being utilised by the industry which is using it to clean sensitive tools, plants and machines with the so called dry ice blasting procedure.



WHEN IS THE PRODUCTION OF DRY ICE ADVISABLE?

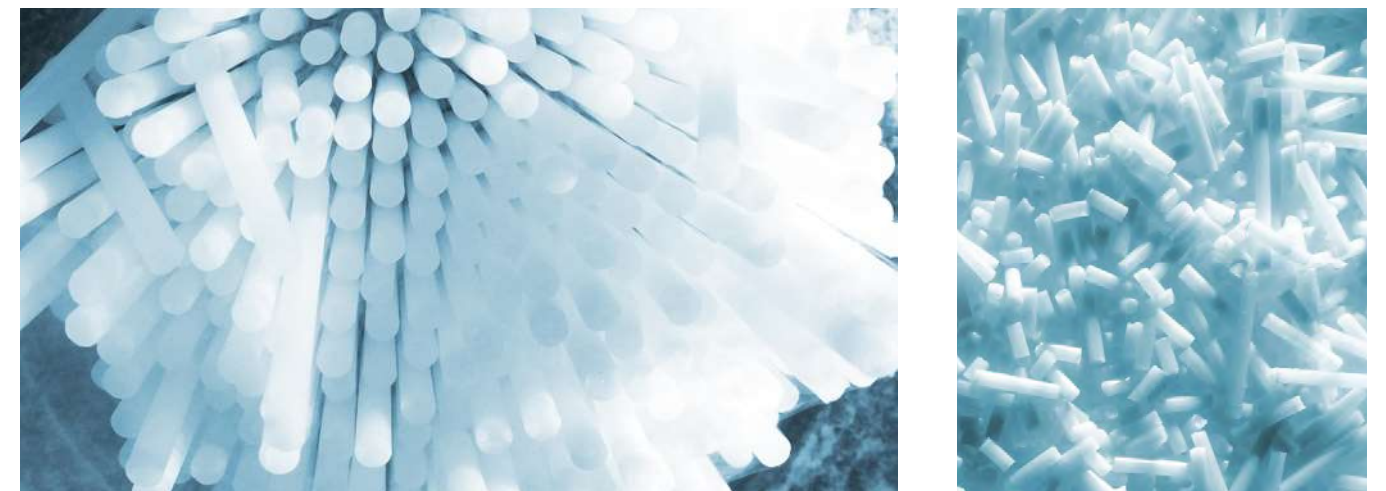
There are good reasons for being flexible.

Whenever dry ice is required in larger quantities, whether spontaneously or regularly, the production of dry ice is reasonable.

Having your own dry ice machine ensures the supply of high-quality dry ice at the right time, in the right place and in the desired quantity.

During the transport of dry ice a small loss of material is inevitable. Furthermore storage and transport, dry ice not only loses weight, but also increasingly loses quality through the condensation of ambient humidity and surface icing. Contrary to storing or transporting dry ice, liquid CO₂ can be stored in a tank for on-site production without loss.

For certain dry ice applications, such as dry ice cleaning, the quality of the dry ice determines the result of the implementation considerably!



The White Lion Arctic is a press for the production of dry ice pellets. By changing the die, the pellet size can be varied between 3, 10 and 16 mm. The production capacity lies at about 130 kg / h or 240 kg / h.

THE CALCULATION OF ECONOMY

The Break Even Point.

If you want to produce dry ice, certain technical conditions have to be fulfilled. In the following excerpt we would like to briefly summarise the most important points for your technical and economic overview.

We provide an Excel spreadsheet so you can carry out a profitability calculation. We also executed an example with realistic figures in relation to the German market for visualisation. Please enter here your individual key figures and create your personal calculation. We will gladly send you the calculation table on request.



THE MANUFACTURING PROCESS

How is dry ice formed?

In practice, the production of dry ice is conducted by relaxation of liquified CO₂ (released from a suitable tank) from a pressure of about 17 bar down to atmospheric pressure.

During the relaxation of the CO₂ (during the transition from the tank to the atmosphere) carbon dioxide snow is produced. In a further step the CO₂ is subsequently expanded in a pressure chamber with the help of nozzles. In this process, the carbon dioxide snow is created.

In the following process this snow is compressed with a press cylinder with a pressure of about 150 – 170 bar according to the snowball principle. The now very dense snow is called dry ice.

The compression during the production of dry ice creates a CO₂ exhaust gas. If required, this can be re-liquefied with the CO₂ recovery plant and recycled back into production. This significantly reduces raw material wastage. For this specific machine please feel free to contact us personally.

Customary dry ice comes in pellets, nuggets, slices and blocks. These are produced in so-called pelletizers, block presses or converters.

Pellets and nuggets are formed by pressing the dry ice through a die which of course vary in shape and size depending on the type and size of the die.

Dry ice blocks are produced in block presses and expelled as a block or disk after the carbon dioxide snow has been compacted.

There is however, another way to produce blocks or disks. This is done by pressing dry ice pellets into their desired shape in so-called converters. The great advantage of this approach is that the actual production of dry ice

by expansion and compression of CO₂ can be dispensed through the process of converting existing pellets. This process saves time and shows the high effectivity of a converter.

Furthermore, a converter has the ability to compact even wrongly shaped pellets again, thus basically no material is wasted.

THE FORMS OF DRY ICE



Dry ice pellets 3 mm



Dry ice nuggets 10–16 mm

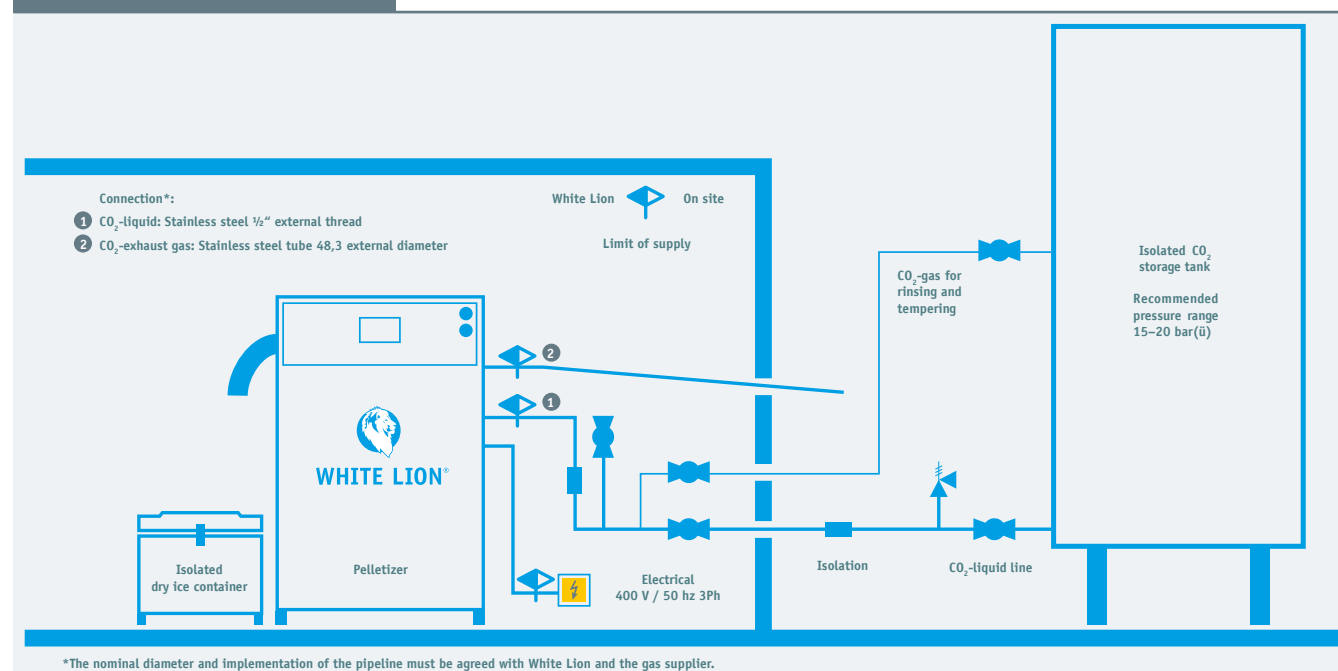


Dry ice blocks and slices



Good to know... The dry ice is constantly sublimating, meaning it changes from its solid to its gaseous state of aggregation. Here, a volume increase with a factor of approximately 700 can be expected. This means that 1 m³ of dry ice produces 700 m³ of gaseous carbon dioxide. CO₂ is oxygen-altering, has a suffocating effect and can be fatal. Because of that, the CO₂ production must be monitored with CO₂ sensors. Excess CO₂ is led out of the building with the help of fans.

CONNECTION DIAGRAM





WL ANTARCTICA S | XL

PELLETIZER WL ANTARCTICA S

The machine "White Lion Antarctica S" is a press for the production of dry ice pellets. By changing the die, the pellet size can be varied between 3, 10 and 16 mm. The production capacity is approx. 120 kg / h for pellets of 3 mm size.

PELLETIZER WL ANTARCITIC XL

For the machine "White Lion Antarctica S" the production capacity is approx. 240 kg / h for pellets of 3 mm size. By changing the die, the pellet size can be varied between 3, 10 and 16 mm.

TECHNICAL SPECIFICATIONS

ELECTRIC

- Power supply: 400 V 3 ph, plug 16 A CEE
- Frequency: 50 Hz
- Control voltage: 24 V DC
- Power consumption: 5 kW

MECHANICAL

- Total weight: approx. 300 kg (without packaging)
- Dimensions (L x T x H): approx. 1500 x 950 x 750mm
- Raw material: CO₂ – liquid
- Inlet pressure: 15 bar(g) – 21 bar(g)
- Performance: approx. 130 kg/h with 3 mm Pellets
- Hydraulic oil: approx. 44 l

ENVIRONMENT

- Recommended temperature range: 15 °C to 35 °C
- Recommended relative humidity: 40% – 80%

TECHNICAL SPECIFICATIONS

ELECTRIC

- Power supply: 400 V 3 ph, plug 16 A CEE
- Frequency: 50 Hz
- Control voltage: 24 V DC
- Power consumption: 8.5 kW

MECHANICAL

- Total weight: approx. 690 kg (without packaging)
- Dimensions (L x T x H): approx. 1700 x 1350 x 990 mm
- Raw material: CO₂-liquid
- Inlet pressure: 15 bar(g) – 21 bar(g)
- Performance: approx. 240 kg/h with 3 mm Pellets
- Hydraulic oil: approx. 100 l

ENVIRONMENT

- Recommended temperature range: 15 °C to 35 °C
- Recommended relative humidity: 40% – 80%

ACCESSORIES MAIN PARTS



Round nozzle S/Power nozzle

- Nozzle length: 130 mm
- Nozzle outlet: 11 mm
- Taper proportions: 7/11 mm
- Quick change of nozzle without tools



Round nozzle M

- Round nozzle with medium ground coverage
- Nozzle length: 145 mm
- Nozzle outlet: 25 mm
- Taper proportions: 8/25 mm
- Quick change of nozzle without tools



Round nozzle XL

- Round nozzle with high ground coverage
- Nozzle length: 128 mm
- Nozzle outlet: 27 mm
- Taper proportions: 8/28 mm
- Quick change of nozzle without tools



Flat nozzle S

- Flat nozzle with the highest flow speed
- Nozzle length: 167 mm / width: 38 mm
- Nozzle outlet: 25 mm x 4 mm
- Inner diameter: 7 mm
- Quick change of nozzle without tools
- Nozzle adapter not included



Flat nozzle M

- Flat nozzle with high ground coverage
- Nozzle length: 325 mm / width: 67 mm
- Nozzle outlet: 50 mm x 4 mm
- Inner diameter: 8 mm
- Quick change of nozzle without tools
- Nozzle adapter not included



Flat nozzle XL

- Flat nozzle with high ground coverage
- Nozzle length: 415 mm / width: 102 mm
- Nozzle outlet: 75 mm x 4 mm
- Inner diameter: 10 mm
- Quick change of nozzle without tools
- Nozzle adapter not included



Premium Ice Gun

- Made of impact resistant plastic
- Ergonomic trigger
- Integrated protection arch
- Switch for the change between dry ice and compressed air blasting
- Combinable with the White Lion Lumi-Package for the lightning
- Nozzle adapter and Lumi-Package are not included



1/2-Inch Ice Gun
Cube & MiniMax

- Made of impact resistant plastic
- Easy handling
- Slim design



Nozzle adapter

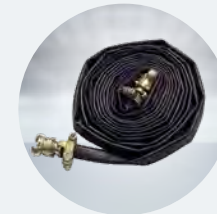
- M20 > M20
- M20 > M16

AIR CONSUMPTION CHART

		WL Cube	WL 1000	WL 1500	WL 3000	WL 5000	WL 5000 Robby									
Bar →		2	3	4	5	6	7	8	9	10	11	12	13	14	15	16
Ø 5		0,7	0,9	1,2	1,4	1,6	1,9	2,1	2,3	2,6	2,8	3,0	3,3	3,5	3,7	4,4
Ø 6		1,0	1,3	1,7	2,0	2,4	2,7	3,0	3,4	3,7	4,0	4,4	4,7	5,1	5,4	5,7
Ø 7		1,4	1,8	2,3	2,7	3,2	3,7	4,1	4,7	5,1	5,7	6,2	6,6	7,1	7,4	7,7
Ø 8		1,8	2,4	3,0	3,6	4,2	4,8	5,4	6,1	6,7	7,3	7,9	8,4	9,1	9,7	10
Ø 9		2,3	3,0	3,8	4,6	5,3	6,1	6,9	7,7	8,4	9,4	10,1	10,8	11,7	12,1	13
Ø 10		2,8	3,7	4,7	5,7	6,6	7,6	8,5	9,6	10,4	11,3	12,4	13,4	14,3	15,3	16
AIR CONSUMPTION																
Air consumption in m3 /min. • pressure declaration in bar • average diameter of nozzle: 0,5 m3 (0,7 + 0,5 = 1,2 m3)																

ACCESSORIES

MAIN PARTS



Compressed air hose

- Diameter: 1"
- Available in different length
- Weather and wear resistant

Hose assembly
in 1/2-, 3/4- and 1-inch

- Blasting hose for use in dry ice blasting with quick coupling system
- Connects the dry ice blasting system to the ice gun and is designed for extreme temperatures
- High temperature, pressure, weather and wear strength

Protective
cover for hoses

- Protection of hose packages and compressed air hoses
- Removable
- Prevents vom impurities and contamination
- Reasonable for the use in different branches and especially in the food industry
- 200my foil hose / length: 125 m / width: 15 cm



Motor and gear box

- Suitable for the blasting systems WL 1000 MiniMax to WL 5000 AirMax
- For service and maintenance please contact White Lion!



Glass lid

- Reasonable for checking the filling level of the dry ice hopper without creating dry ice fog
- Available on request for the systems WL 1000 MiniMax up to WL 5000 AirMax and the WL 5000 Robby
- Retrofittable



Front cover

- Aluminium operation panel with anodic low-pressure
- Available as a set with the following operating controls: dry ice volume regulator, pre-pressure and blasting pressure manometer, emergency stop function, digital display showing the dry ice transport volume, pressure reducer, on/off switch



Lumi-Package

- Material: Aluminium anodized
- Color: black
- Length: 140 mm
- Diameter: 33 mm
- Illuminant: CREE LED
- Batteries (3 x R03/AAA) are part of the delivery content
- Alternative: Main supply via hose
- Weight: LED a piece: 119 g / System total: 850 g



Dry Ice Scrambler

- For assembly between the dry ice blasting gun and the dry ice nozzle
- Crushes the dry ice pellets by means of interchangeable grid ground plates
- Increases the effectiveness of countless applications
- Decreases the dry ice consumption (depending on the impurity)
- Quickly adaptable without tools
- Combinable with all nozzles
- Length: 220 mm
- Hose adapter for assembly in the hose



Dosing disc

- Suitable for the blasting systems WL 1000 MiniMax to WL 5000 AirMax
- Also available as a set containing dosing unit, gaskets and washers



Nozzle angle & nozzle extensions

- Spandrel for assembly between ice gun and nozzle
- Available as 45° and 90°
- Special angles on request
- Facilitates the blasting of hardly accessible
- 250/500/1000 mm



Protective cover

- Robust and washable protection cover
- Plastic viewing window
- Side pockets for accessories
- Machine washable by 30°C



White Lion transport Box

- In this box your dry ice blasting system is kept in safe custody
- Lockable

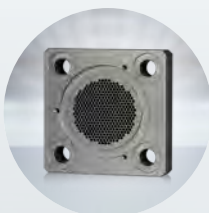
Accessories

PELLETIZER



Sintered filter

• Sintered filter: S + XL



Matrix

• Matrix: 3, 10, 12 and 16 mm



DRY ICE TRANSPORT BOX

For a well cooled transportation of dry ice, we developed our White Lion transport boxes with large capacity and extraordinary good isolation. This way your dry ice comes home secure and most of all icecold.

During the transportation of dry ice over long distances, there are unavoidable sublimation losses. The dry ice loses not only weight, but – due to condensation of the environmental humidity and the steady glaciation of the surface – increasingly quality. In case of certain dry ice applications like dry ice blasting, the quality of the dry ice determines the result of the application considerably.

We know these physical properties and the related task as well as no one else. Therefore a secure delivery of your dry ice is our goal. Our dry ice transport boxes have excellent insulation. The sublimation losses are low and the economy high. “Directly from the production to the user” is our motto.



The dry ice boxes can be stacked by a lifting cart without the need of a palette.



DRY ICE TRANSPORT CONTAINER
BLACK BOX 100



DRY ICE TRANSPORT CONTAINER
GREY BOX 150



DRY ICE TRANSPORT CONTAINER
GREY BOX 300



DRY ICE TRANSPORT CONTAINER
GREY BOX 500



+ HIGHLIGHTS

Our black box made of EPP is the lightweight from our product line. Due to their low weight, the boxes contribute to reducing your transport costs. The White Lion Black Box has a high insulation effect, complies with hygiene regulations and convinces with its longevity. This box is the optimal basic equipment for short and medium transport times.

+ HIGHLIGHTS

- + Useful external dimensions
- + For dry ice and food transport
- + Top opening
- + Single-pieced structure
- + Hollow shell insulated with low density Polyurethan foam and reinforced with inner metal inserts
- + Locking catch and hinges made of stainless steel
- + Struts for extra stability
- + Removable silicon seal, easy to clean

+ HIGHLIGHTS

- + Useful external dimensions
- + For dry ice and food transport
- + Top opening
- + Single-pieced structure
- + Hollow shell insulated with low density Polyurethane foam and reinforced with inner metal inserts
- + Locking catch and hinges made of stainless steel
- + Struts for extra stability
- + Removable silicon seal, easy to clean
- + Lid opening with gas struts
- + The airtight lock of the lid is also guaranteed without locking
- + Stackable thanks to a suitable space on the lid

+ HIGHLIGHTS

- + Useful external dimensions
- + For dry ice and food transport
- + Top opening
- + Single-pieced structure
- + Hollow shell insulated with low density Polyurethane foam and reinforced with inner metals inserts
- + Locking catch and hinges made of stainless steel
- + Struts for extra stability
- + Removable silicon seal, easy to clean
- + Lid opening with gas struts
- + The airtight lock of the lid is also guaranteed without locking
- + Stackable thanks to a suitable space on the lid

GENERAL DATA

Outer dimensions 800 × 600 × 570 mm
Inner dimensions 663 × 456 × 420 mm
Wall thickness 70 mm
Material Epp black material (expanded polypropylene, CPC free / EPP approx. 60g/l)
Volume approx. 126 l
Capacity Dry ice pellets approx. 100 kg / Dry ice
Own weight approx. 10,5 kg

GENERAL DATA

Outer dimensions 800 × 600 × 930 mm (960 roll version)
Innner dimensions 605 × 405 × 610 mm
Pallet version Stainless steel frame with 4 rails, the bottom is 100 mm above the ground
Wheels version Galvanized steel reel seat with 2 fixed and 2 movable wheels or 4 movable wheels, diam. 125 mm, from the ground 140 mm
Volume 150 l
Own weight 53 kg
K value 0,320 W / (m² K)

GENERAL DATA

Outer dimensions 1000 × 800 × 930 mm (960 roll version)
Inner dimensions 805 × 605 × 610 mm
Pallet version Stainless steel frame with 4 rails, the botto 100 mm above the ground
Wheels version Galvanized steel reel seat with 2 fixes and 2 movable wheels or 4 movabel wheels, diam. 125 mm, from the ground 140 mm
Own weight 80 kg
K value 0,295 W / (m² K)

GENERAL DATA

Outer dimensions 1200 × 1000 × 930 mm (970 roll version)
Inner dimensions 100 × 805 × 610
Pallet version Stainless steel frame with 4 rails, the bottom is 1000 mm above the ground
Volumen 500 l
Own weight 100 kg
K value 0,270 W / (m² K)



INVESTIEREN SIE IN EINE ZUKUNFTSWEISENDE TECHNOLOGIE

Warum investiert man in Anlagen und Maschinen? Kurz gesagt, damit es sich rechnet und der Einsatz um ein Vielfaches zurückkommt.

Das prägnanteste Benefit einer Trockeneisstrahlanlage ist der Faktor Zeit: Zeit für mehr Produktivität und eine produktive Zeit in der Instandhaltung sowie das Streben nach höherer Qualität. Kurz gesagt: Time is Money!

Eine Trockeneisstrahlanlage ist ein Investitionsgut, das sinnvollerweise schonend für das Budget finanziert oder geleast werden sollte – und zwar so, dass es Sinn macht. Natürlich so, dass Sie aus den zusätzlich erwirtschafteten Geldern Ihren Einsatz bequem und kaum spürbar bezahlt bekommen.

Um für Sie passende Lösungsmöglichkeiten zu finden, sind wir von White Lion mit Banken und Leasinggesellschaften in den Dialog getreten. Freuen Sie sich auf Ihre individuell

abgestimmten Alternativen – meist bereits digital – in Kombination mit unseren Trockeneisstrahlgeräten, Pelletizern und Trockeneisbehältern. Genauso passgenau wie unsere technischen Alternativen.

Für Existenzgründer haben wir im weiteren Existenzgründer-Pakete in Form von Schulungen und Datenpaketen zusammengestellt. Das Datenpaket besteht aus Bildmaterial zur Gestaltung einer eigenen Internetpräsenz und weiteren Printmedien.

Wenn Sie Fragen zum Thema Finanzierungen haben, stehen wir Ihnen gerne mit unseren gesammelten Erfahrungen beratend zur Seite.

Für Ihr persönliches Leasing- oder Finanzierungsangebot schicken Sie bitte eine Anfrage an:
finanzierung@white-lion.eu

TOP TEN

Deshalb ist das Trockeneisstrahlen mit White Lion so überlegen!

1. Made in Germany

Wir produzieren ausschließlich in Deutschland – dies bezieht sich insbesondere auf Montage und Zerspanung. Des Weiteren bieten wir rund um die Uhr eine telefonische Erreichbarkeit an.

2. Anwendereffizient!

Die Trockeneis-Technologie von White Lion ist zeitsparend, wenig arbeitsaufwändig, schnell und effektiv: Sensationelle Reinigungsergebnisse, kurze Reinigungszyklen!

3. Online Reinigung!

Anlagen und Maschinen können direkt an ihrem Standort mit Trockeneis gereinigt werden. Das bedeutet, dass keine aufwendige Demontage nötig ist und sich die Produktivität Ihres Unternehmens erhöht!

4. Time is Money!

Eine Trockeneis-Reinigung ist schnell & effektiv. Daraus resultieren höhere Standzeiten!

5. Oberflächenschonend, nicht abrasiv, nicht entzündbar und nicht elektrisch leitend!

Eine Trockeneisreinigung mit White Lion Strahlanlagen ist extrem schonend und kann sogar bei elektronischen Bauteilen eingesetzt werden!

6. Vermeidung von Sekundärabfall!

Trockeneis als Strahlmittel verdampft, sublimiert sofort beim Reinigungsprozess und hinterlässt somit kein kontaminiertes Strahlmittel wie Wasser oder Granulate jeder Art. Das ist ein wichtiger Aspekt hinsichtlich der Wirtschaftlichkeit der Trockeneisreinigung.

7. Der Trockeneis-Strahl ist überall!

Im Vergleich zu konventionellen Industriereinigungen kommt der mit White Lion erzeugte Trockeneisstrahl bei Anlagen, Maschinen oder Bauteilen an fast jede Stelle.

8. Umweltfreundlich und ressourcenschonend!

Der grüne Gedanke „the green mind“ ist bei der Trockeneisreinigung inklusive! Das Trockeneis-Strahlverfahren erfüllt die Richtlinien von USDA, FDA und EPA.

9. Anwendersicherheit und Arbeitsschutz!

Ihre Mitarbeiter sind während der Arbeit mit White-Lion-Trockeneisstrahlanlagen nicht giftigen Dämpfen von Chemikalien und Lösungsmittel ausgesetzt.

10. Ja, bei der Nahrungsmittel Industrie!

Das Trockeneis-Strahlverfahren ist für die Lebensmittelindustrie zugelassen. CO2 ist lebensmittelecht! White Lion bietet ein starkes, gründliches und schnelles Reinigungsverfahren für alle Industriebranchen dieser Welt.





WHITE LION®

Dry Ice & Laser Cleaning Technology

An der Schillertanne 13
D-64367 Mühlthal | Germany

Telefon: +49 6151 6066820
Fax: +49 6151 3594081

E-Mail: info@white-lion.eu
Web: www.white-lion.eu



Made with passion.

www.white-lion.eu